

# Personal budgets

Wendy Sharman

# What are personal budgets?

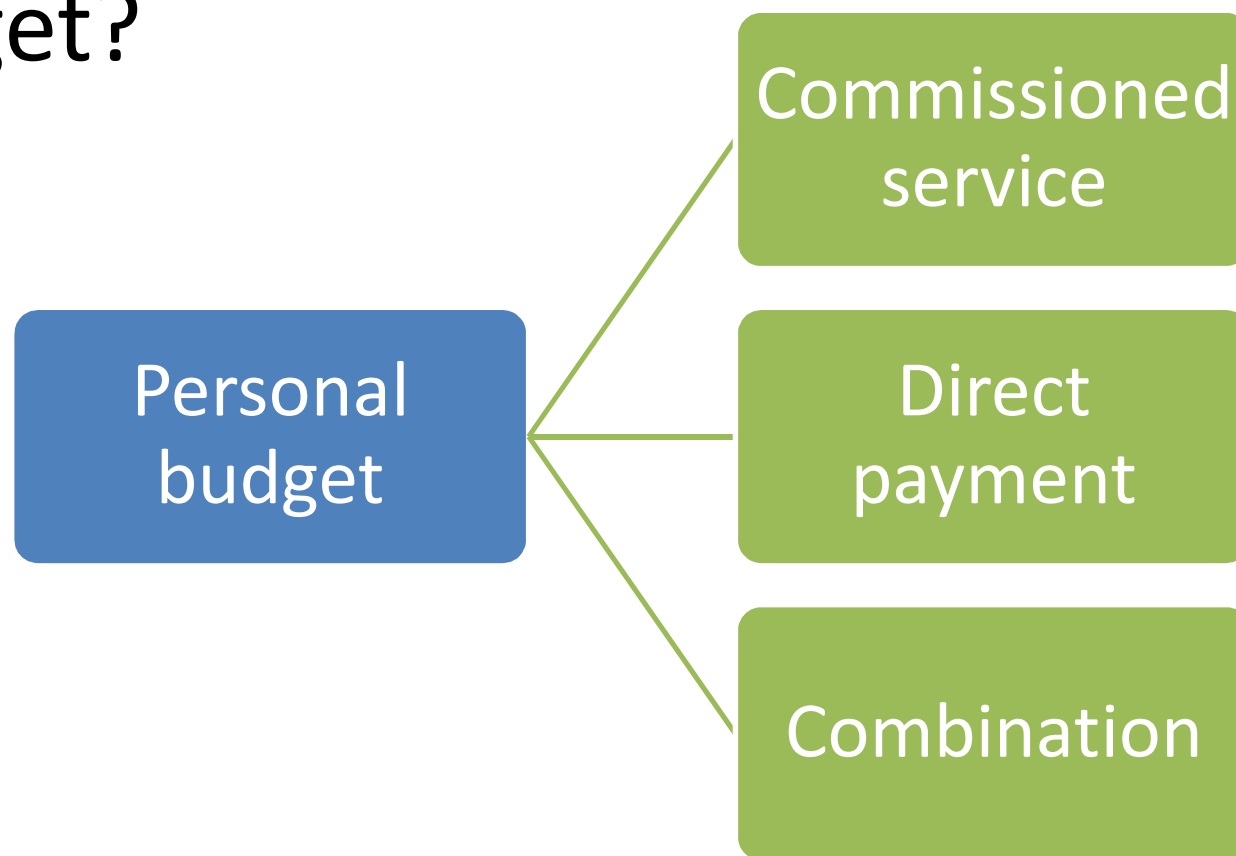
A sum of money that it has been calculated is sufficient to meet a persons' assessed unmet eligible needs

Social care

Health

Education

# How can someone use a personal budget?



# How many people use personal budgets?

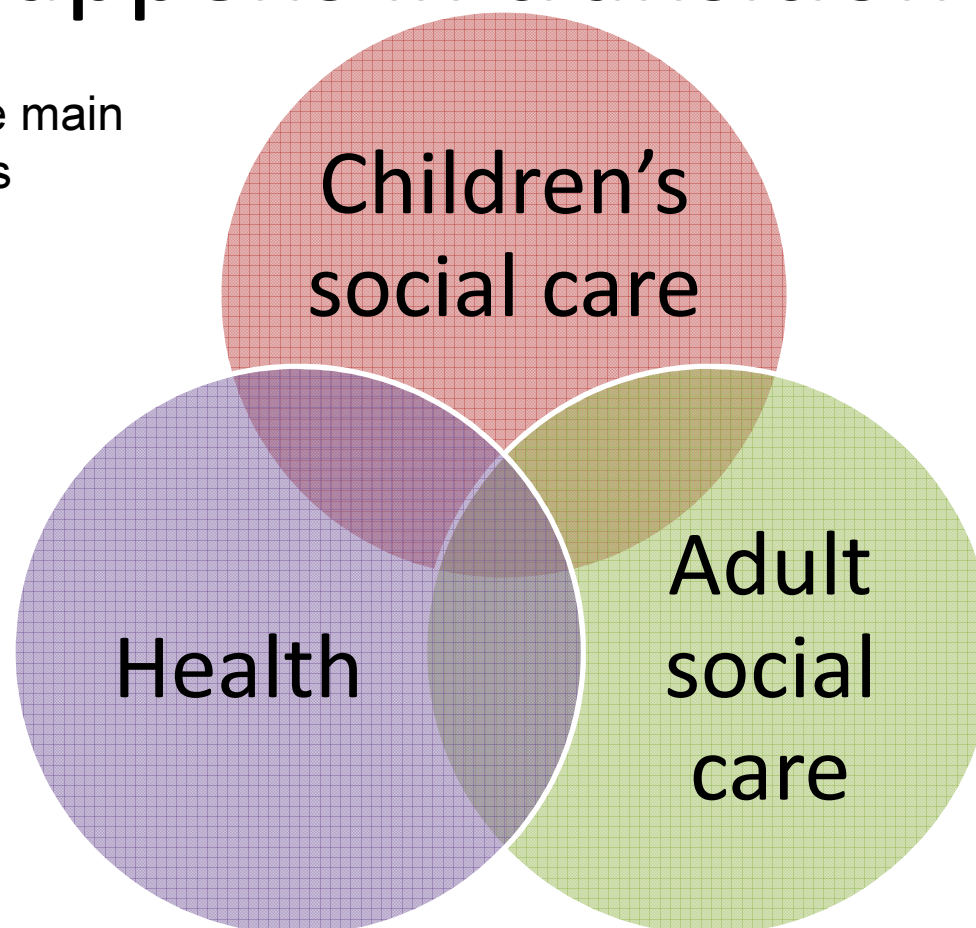
Personal Budget Summary Social Care 2015/16	Total people	Spend
Personal Budgets - adults	1569	£21,572,259.00
Direct payments – adults (included in figures above)	513	£6,331,491.00
Direct Payments - Disabled Children's Team	87	£402,308.00

Personal Health Budgets Summary 2015/16	Total people	Spend
Adults Continuing Healthcare	18	£945,673.00
Children's	1	£760.81
Children's Continuing Healthcare	4	£25,528.00

Bath & North East Somerset - *The place to live, work and visit*

# What happens in transition?

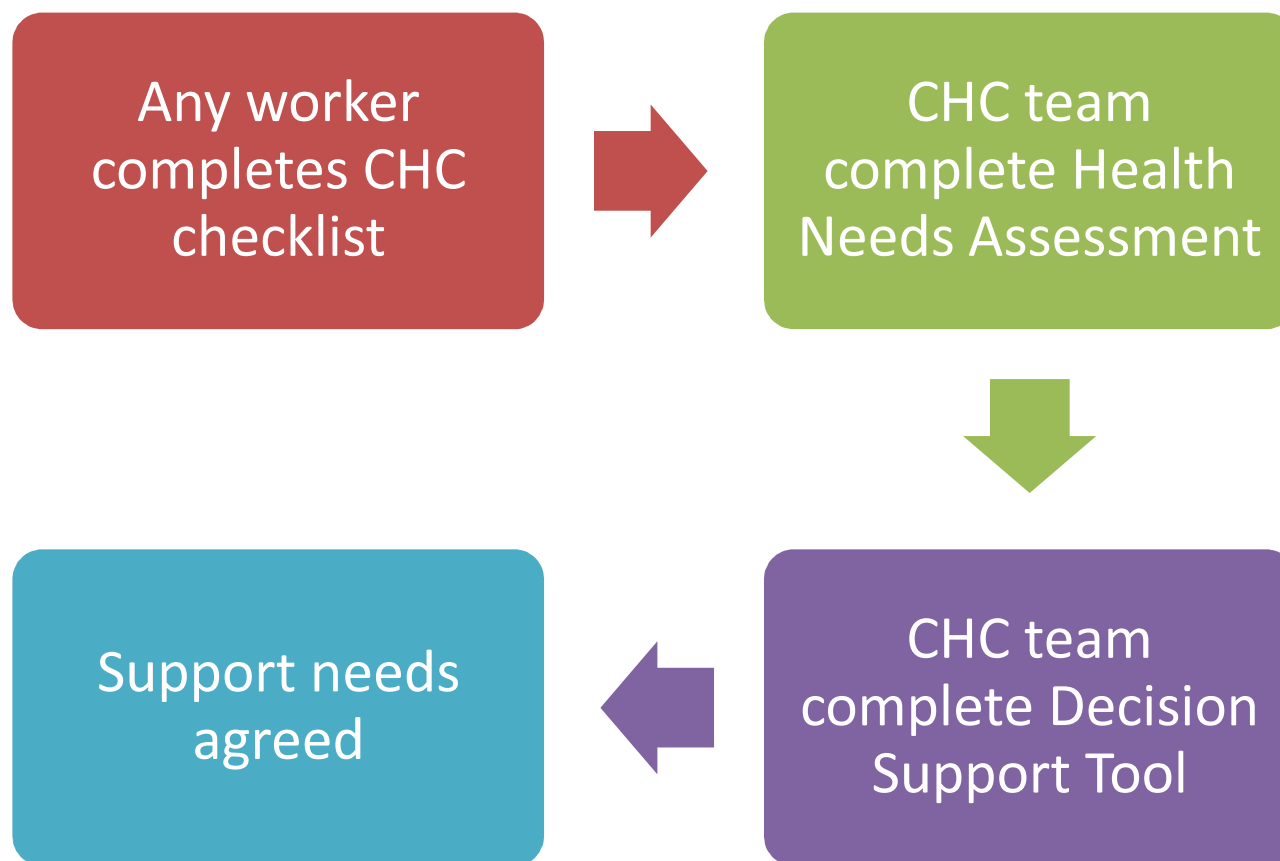
There are three main  
transition points



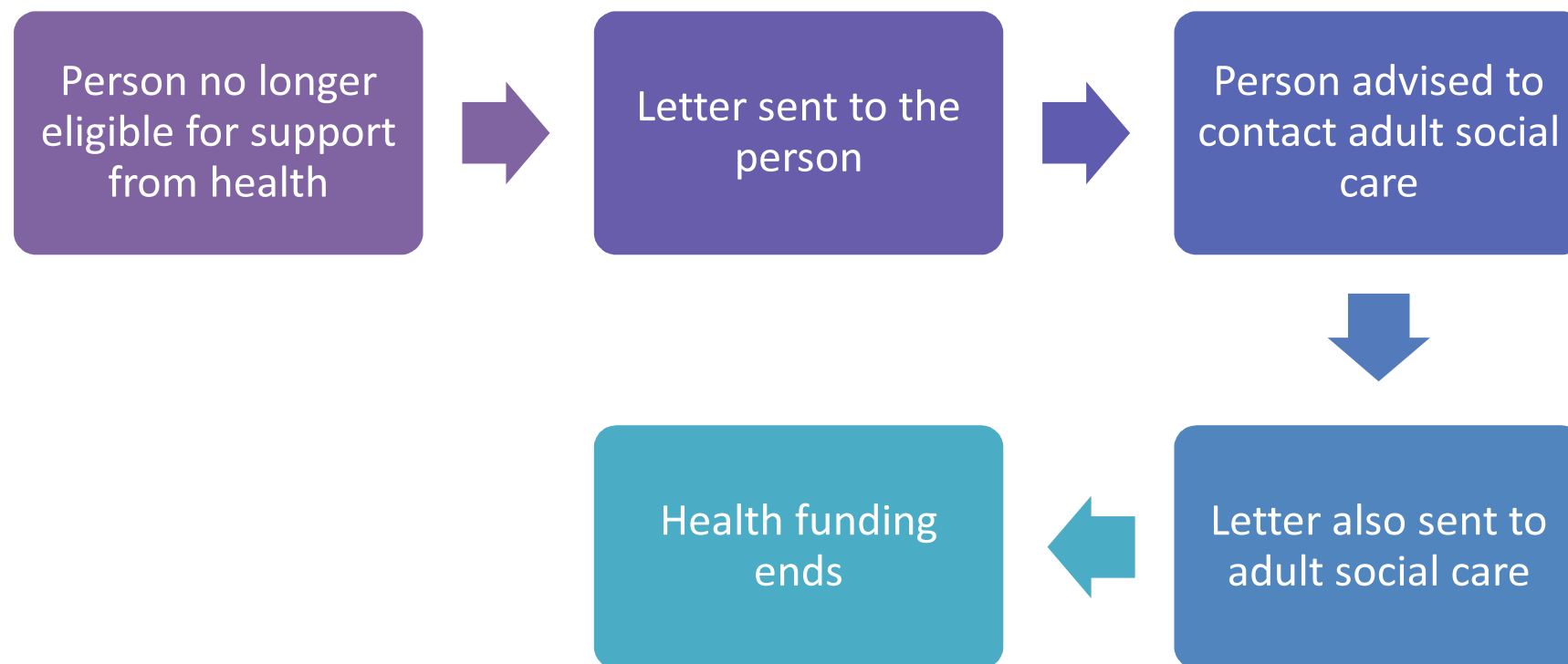
# Children's to adults social care



# Adult social care to health

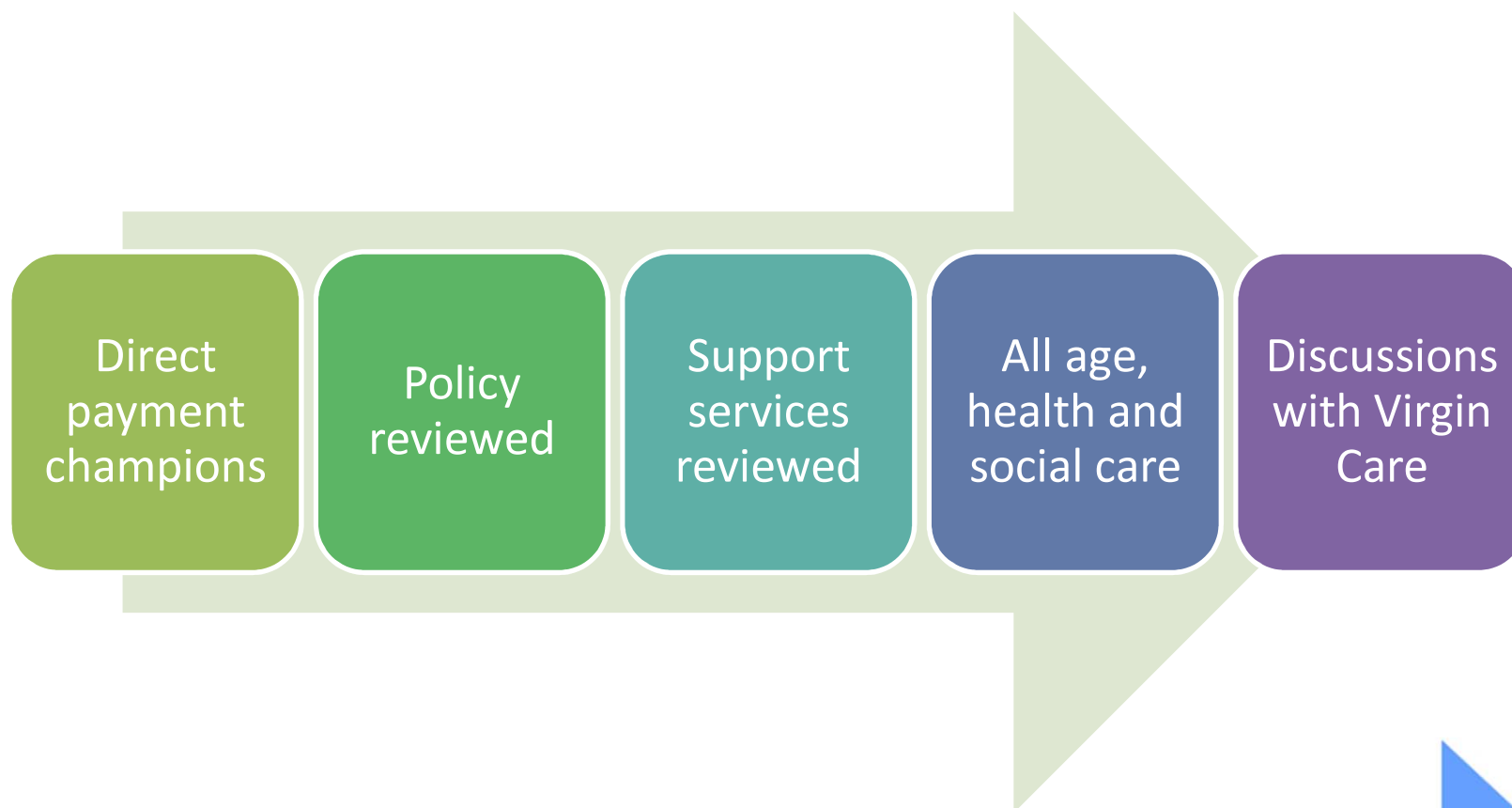


# Health to adult social care





# What work is underway?



Bath & North East Somerset - *The place to live, work and visit*

# Thank you

[wendy\\_sharman@bathnes.gov.uk](mailto:wendy_sharman@bathnes.gov.uk)

01225 477922